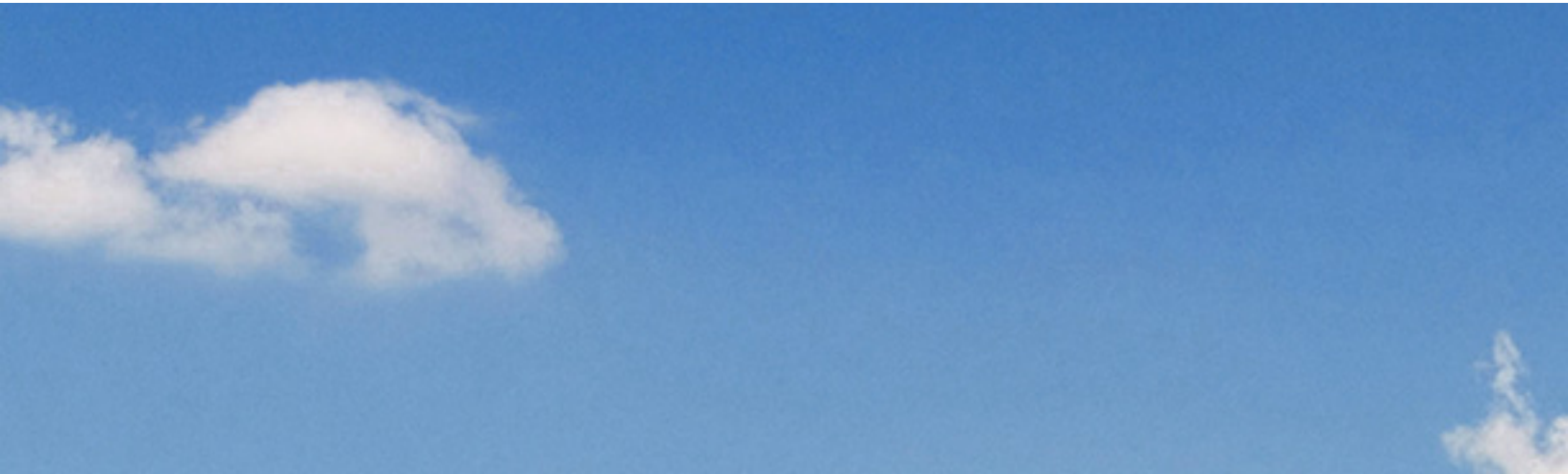


موتور دیزل

Manufacturer	Deutz	تولید کننده
Type	BF6M1013FCG3	تیپ
Number of cylinders	6	تعداد سیلندر ها
Cylinder arrangement	in-line	آرایش سیلندر ها
Cycle	4 stroke	چرخه
Aspiration	Turbo charged	سیستم تنفس
Bore × Stroke , mm	105X120	قطر سیلندر × کورس پیستون
Displacement , Liters	4	جا به جایی
Speed Governor	Mechanical/Electronic	سرعت گاورنر
Cooling System	water-cooled	سیستم فنک کننده
Frequency	50Hz	فرکانس
Starter Motor	24V	استارتر موتور

ژنراتور

Manufacturer	Mecc Alte	تولید کننده
Type	ECO38-2S	تیپ
Exciter type	Brushless	نوع کانتر
Power factor	0.8	ضریب قدرت
Voltage	400-230	ولتاژ
Frequency	50 Hz	فرکانس
Speed, Rpm	1500	سرعت
Insulation class	H	کلاس عایق
Protection class	IP22	کلاس حفاظتی
Excitation	Brushless	سیستم تمریک



ETDG225

Generator Set Technical Data Sheet

Water-Cooled DEUTZ BF6M1013FCG3

Standby: 180KW/225KVA

Prime: 160KW/200KVA

at 50Hz,230/400V

Generator Set Main Specifications

3-PH, 50Hz@1500RPM, 400/230V (Other voltage ranges are available)

- Compacted power units
- Composed of DEUTZ four cycle, water cooled diesel engine and Leroy-Somer alternator
- Cooling radiator and fan
- Electronic governor
- Electrical 12V DC starter & charge alternator motor
- Normal duty, dry type air filter
- Brushless, Self-excited, IP23, Insulation class H and single bearing alternator
- Digital auto-panel control system with emergency stop press bottom
- Welded steel base frame with A/V mounting
- Flexible fuel connection hoses and lube-oil drain hand pump fitted
- Starter batteries with cables and rack
- Industrial type silencer and steel bellows delivered loose
- Mounted main circuit breaker
- Soundproof canopy or container, 8 hours working bottom fuel tank and engine jacket water heater are optional available on the whole range
- According with standards of **ISO8528,ISO3046,ISO3046,ICE34-1GB/T2820-97,GB755**

Prime Power	160KW/200KVA	Standby Power	180KW/225KVA
Rated Speed	1500RPM	Frequency	50Hz
Phase	3 Phase 4 Wires	Rated Voltage	400/230V
Engine Model	BF6M1013FCG3	Alternator Model	LSA46.2M5
Steady Voltage Deviation	≤±1%	Transient Voltage Adjustment · Recovery Time (Sudden deducting / Increasing load)	≤+20% ·4s / -15%·4s
Steady Frequency Drop	≤2%	Transient Frequency Adjustment · Recovery Time (Sudden deducting / Increasing load)	≤+10% ·3s / -7%·3s
Dimension Open Type	2750x1120x1710	Gross Weight	1900
Dimension Silent Type	2910x1300x2160	Gross Weight	2200

- a. **Available in the following voltages:**
415/240 V·400/230 V·380/220 V·220/127 V·200/115V
- b. **Standby Power: Standby duty operation, under variable load, without over load**
- c. **Prime Power: Continuous duty operation, under variable load 24/24h-10% over load permissible** **1 hour/12 hours**
- d. **ISO8258:Rating are given for 25°C ambient temperature.Attitude:100m above sea level.Derating,please contact us or refer to data sheet**

Engine Main Specifications

DEUTZ Diesel Engine

Engine Model	BF6M1013FCG3
Number of Cylinder	6
Cylinder Arrangement	In line
Cycle	6
Aspiration	after-cooled turbo-charged
Bore X Stroke (mm X mm)	108X130
Displacement (L)	7.146
Compression Ratio	18.1
Prime Power/Speed(KW/RPM)	183@1500
Standby Power/Speed(KW/RPM)	201@1500
Governor	Electrical(EMR/GAC)
Cooling System	Radiator with water cooled
Speed Stability (%)	≤3
Fuel Consumption at 100% Load(L/H)	50.1
Start Motor System	12 Vdc battery and start motor

Flexible Exhaust Connector

Protection Mach

Cooling System

Block Heater

[Recommended for ambient temperature below 0°C (32°F)]

Radiator Core Guard

Controller

-Automation

External Starting Order

Plug Preheating

-Remote Start Capability

Utility Sensing, 3-Phase

-Engine Parameter Control

Plug Preheating Control

Water Preheating Control

-Measurements

Analog indicator

Line Voltage, Volts

Phase Current, Amps

Single Voltage, Volts

-Safety Device

Overload or Short-circuit Fault

Differential Triggering Fault

-Miscellaneous

Alarm Horn

Battery Charger, 12 Volt

Differential Protection with Time and Sensitivity Adjustment

Permanent insulation Controller

Fuel System

Automatic Fuel Tank Fill Kit

Sub-base Fuel Tank with Secondary Containment Basin

Sub-base Fuel Tank Leak Alarm

Water Separator Fuel Filter

Electrical System

Battery Charger, Equalize/Float Type

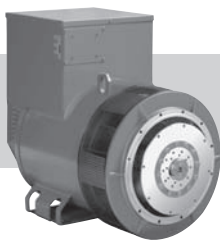
Battery isolator Switch

Engine and Alternator

Air Cleaner, Heavy-Duty (with air restriction indicator)

Electronic isochronous Governor

Lube Oil Drain Pump



meccalte



ECO 38N

MECCALTE spa - Via Roma, 20 - 36051 CREAZZO (VI) ITALIA
 Tel. +39 0444/396111 - Fax +39 0444/396166 - e-mail : info@meccalte.it
 web site: www.meccalte.com

4 POLE

CHARACTERISTICS

INDUSTRIAL RATINGS

ambient 40° C

Type	KVA - cos 0.8φ- 3 Phase continuous							Efficiency		
	CL. H (ΔT= 125°C)				CL. F (ΔT= 105°C)			η % CL. H (ΔT= 125°C)		
Series Star Y	380	400	415		380	400	415	2/4	3/4	4/4
Parallel Star YY	190	200	208	IP45	190	200	208			
Series Delta Δ	220	230	240	400 V	220	230	240			
Parallel Delta ΔΔ	110	115	120		110	115	120			
ECO38-1SN/4	180	180	180	145	170	170	170			
ECO38-2SN/4	200	200	200	160	185	185	185	91,7	92,9	92,7
ECO38-3SN/4	225	225	225	180	207	207	207	92	93,3	93
ECO38-1LN/4	250	250	250	200	230	230	230	92,4	93,7	93,4
ECO38-2LN/4	300	300	300	240	275	275	275	92,7	94	93,7
ECO38-3LN/4	350	350	350	280	320	320	320	92,6	93,7	93,5

Type	CL. H (ΔT= 125°C)				CL. F (ΔT= 105°C)			Efficiency		
	CL. H (ΔT= 125°C)				CL. F (ΔT= 105°C)			η % CL. H (ΔT= 125°C)		
Series Star Y	440	460	480		440	460	480	2/4	3/4	4/4
Parallel Star YY	220	230	240	IP45	220	230	240			
Series Delta Δ	254	265	277	480 V	254	265	277			
Parallel Delta ΔΔ	127	133	138		127	133	138			
ECO38-1SN/4	220	220	220	175	205	205	205			
ECO38-2SN/4	240	240	240	192	220	220	220	92,8	94	93,8
ECO38-3SN/4	270	270	270	215	250	250	250	93,4	94,5	94,2
ECO38-1LN/4	300	300	300	240	280	280	280	93,7	94,9	94,5
ECO38-2LN/4	340	360	360	280	310	330	330	93,9	95,1	94,7
ECO38-3LN/4	420	420	420	330	385	385	385	93,3	94,5	94,3

STANDBY RATINGS

Type	KVA Temp. Rise / Ambient °C			KVA Temp. Rise / Ambient °C		
	50 Hz			60 Hz		
	163° / 27°	150° / 40°	125° / 27°	163° / 27°	150° / 40°	125° / 27°
ECO38-1SN/4	196	188	188	236	230	230
ECO38-2SN/4	220	211	211	264	253	253
ECO38-3SN/4	250	237	237	300	284	284
ECO38-1LN/4	275	264	264	330	316	316
ECO38-2LN/4	330	315	315	396	378	378
ECO38-3LN/4	370	360	360	444	432	432

Type	J (Kgm ²) B3-B14 FORM	Weight (Kg)	Air Volume		Noise dB(A)			
			Air Volume		50 Hz		60 Hz	
			50 Hz (m ³ /min)	60 Hz (m ³ /min)	1m	7m	1m	7m
ECO38-1SN/4	1,7243	510	32	39	82	69	86	73
ECO38-2SN/4	1,8799	560						
ECO38-3SN/4	2,0751	590						
ECO38-1LN/4	2,3481	680						
ECO38-2LN/4	2,8342	765						
ECO38-3LN/4	3,4747	905						

ACCESSORIES

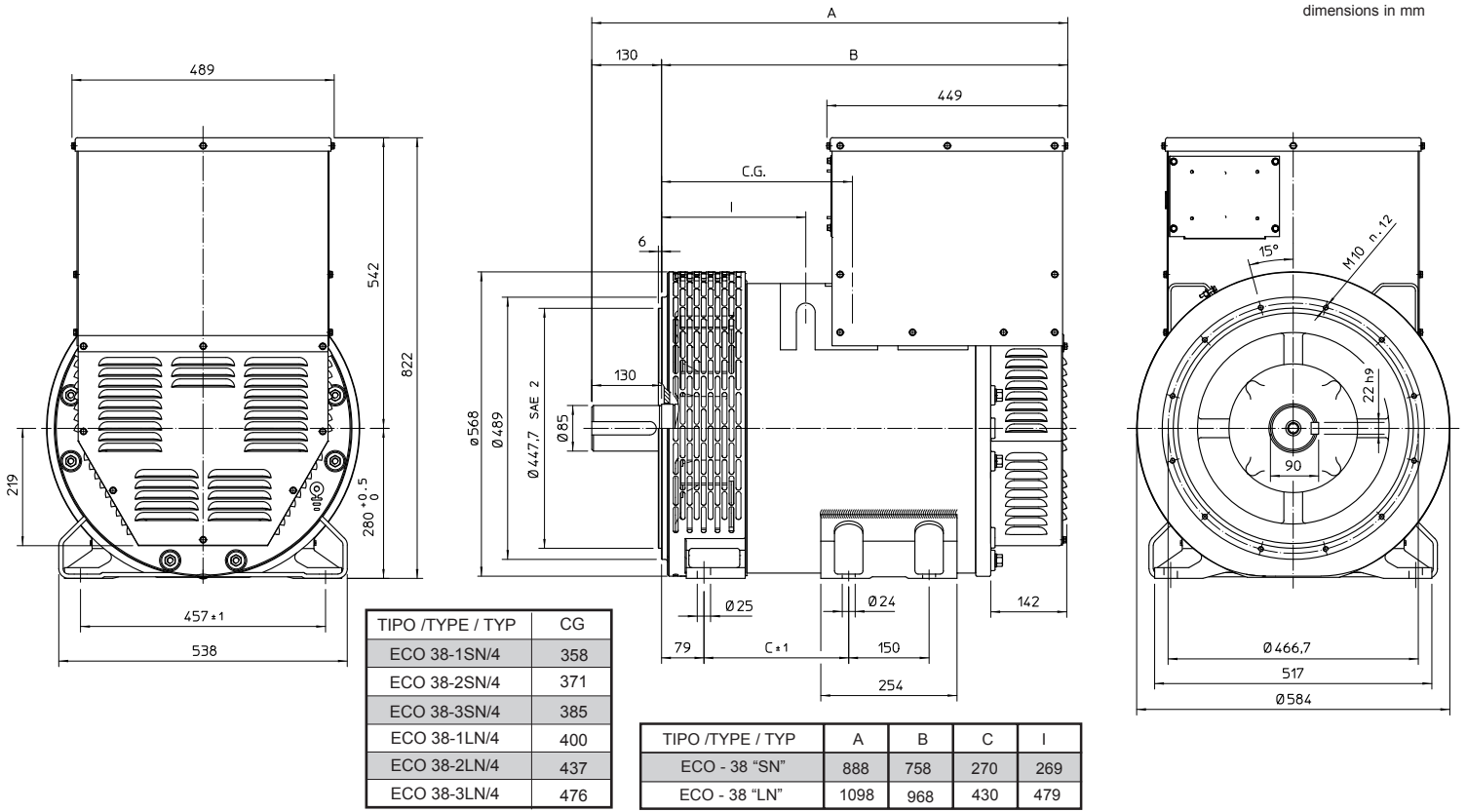
REGULATOR				PARALLEL DEVICE	THERMAL PROTECTION			HEATERS	MECHANICAL PROTECTION		
DSR	DER-1	SR7/2	UVR6		PTC	BIMET. DEVICE	PT100		IP21	IP23	IP45
<input checked="" type="checkbox"/>	<input type="checkbox"/>	<input type="checkbox"/>	<input type="checkbox"/>	<input type="checkbox"/>	<input type="checkbox"/>	<input type="checkbox"/>	<input type="checkbox"/>	<input type="checkbox"/>	<input checked="" type="checkbox"/>	<input type="checkbox"/>	<input type="checkbox"/>

● = Standard
 = Optional

Rating



OVERALL DIMENSIONS B3-B14 FORM



OVERALL DIMENSIONS MD35 FORM

